

EMERALD LAKES PHASE XIII

BEING A REPLAT OF A PORTION OF TRACT 1, EMERALD LAKES AS RECORDED
IN PLAT BOOK 9, PAGE 22 OF THE PUBLIC RECORDS OF
MARTIN COUNTY, FLORIDA.

SECTION 36, TOWNSHIP 38 SOUTH, RANGE 41 EAST

SHEET 2 OF 3

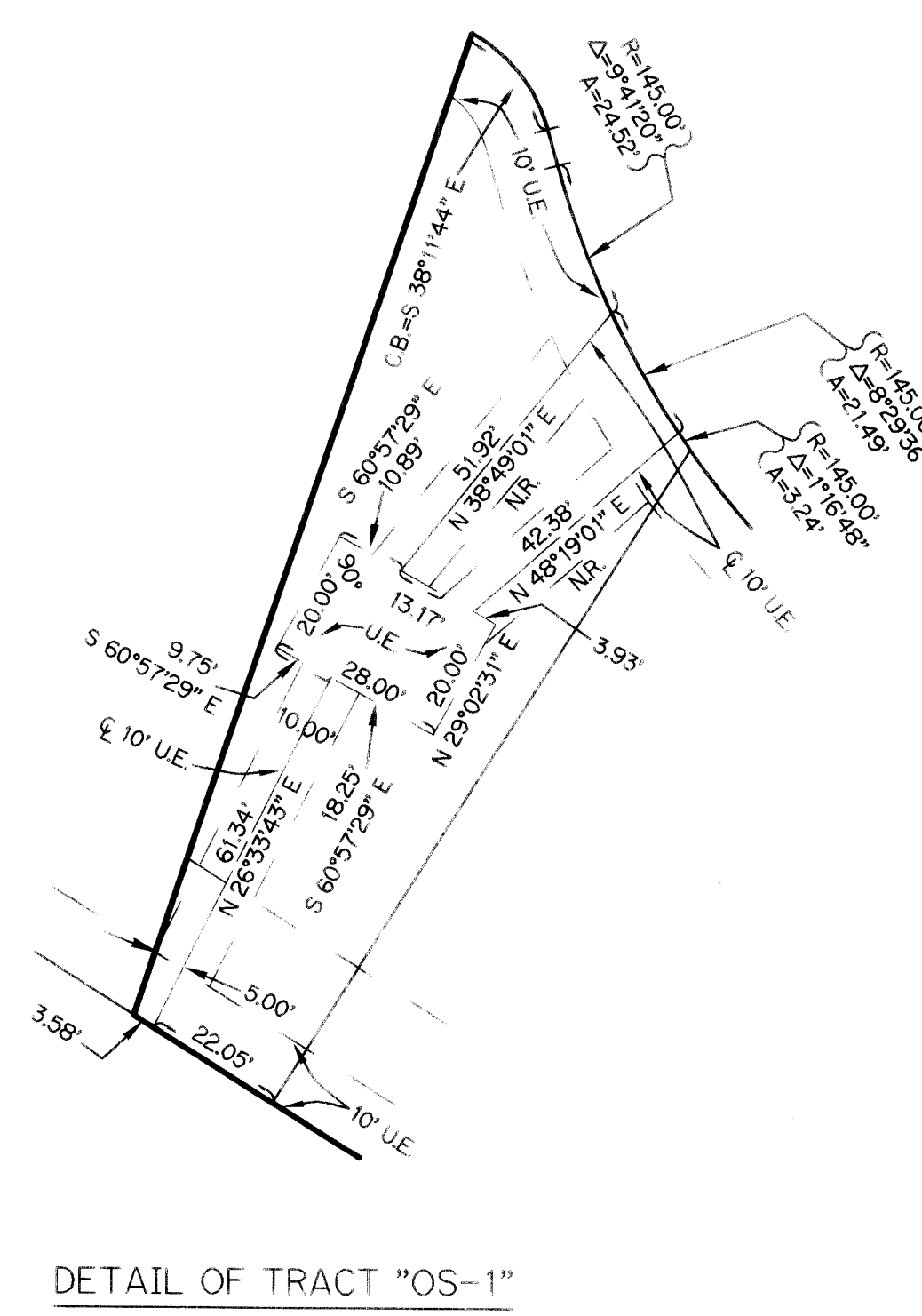
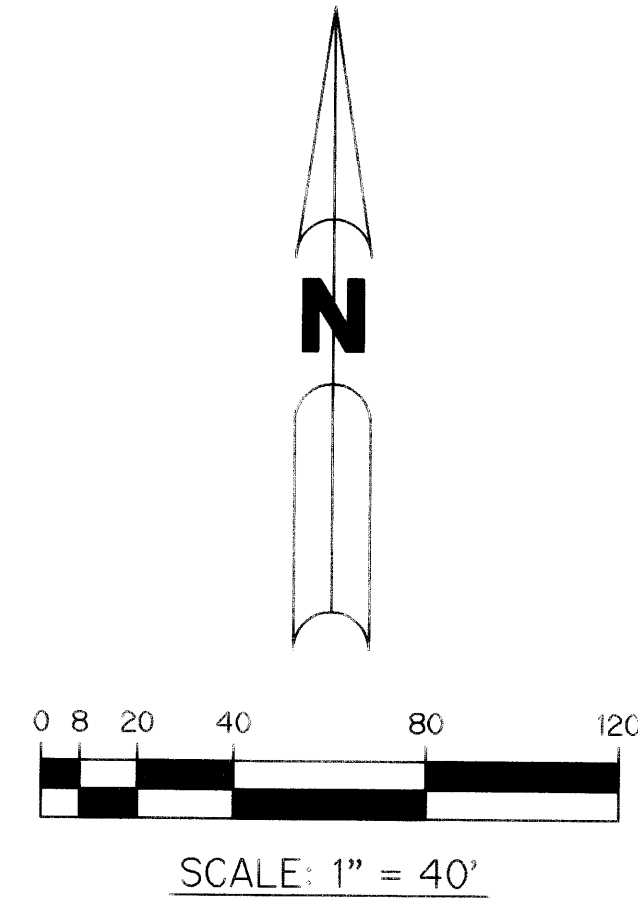
DECEMBER 6, 1994

I, MARSHA STILLER, CLERK OF THE CIRCUIT COURT OF MARTIN COUNTY
FLORIDA, HEREBY CERTIFY THAT THIS PLAT WAS FILED FOR RECORD IN
PLAT BOOK 13, PAGE 72, MARTIN COUNTY, FLORIDA, PUBLIC
RECORDS THIS 12 DAY OF April, 1995.

MARSHA STILLER, CLERK
CIRCUIT COURT
MARTIN COUNTY, FLORIDA

By: *Deborah Longtin*
DEPUTY CLERK

FILE NO. 1112538



- LEGEND:
- - PERMANENT REFERENCE MONUMENT, PLS #4213
 - - PERMANENT CONTROL POINT, PLS #4213
 - Δ - DELTA ANGLE
 - A - ARC LENGTH
 - D.E. - DRAINAGE EASEMENT
 - NR - NOT RADIAL
 - O.R. - OFFICIAL RECORD
 - O.R.B. - OFFICIAL RECORD BOOK
 - O.S. - OPEN SPACE
 - P.B. - PLAT BOOK
 - PGS - PAGES
 - PLS - PROFESSIONAL LAND SURVEYOR
 - R - RADIUS
 - R.O.W. - RIGHT-OF-WAY
 - U.E. - UTILITY EASEMENT
 - P.O.B. - POINT OF BEGINNING
 - P.O.C. - POINT OF COMMENCEMENT
 - C.B. - CHORD BEARING
 - CH - CHORD LENGTH
 - CI - CURVE NUMBER *SEE CURVE TABULATION*

THIS INSTRUMENT PREPARED BY
PERRY C. WHITE P.L.S. 4213 STATE OF FLORIDA
LAWSON, NOBLE AND ASSOCIATES, INC.
ENGINEERS PLANNERS SURVEYORS
WEST PALM BEACH, FLORIDA